

NOTES:

UNLESS OTHERWISE SPECIFIED:

1. **CAD:** USE TL400-000105-002.X_T FOR TOOLING AND MANUFACTURE. THIS DRAWING WAS GENERATED FROM A CAD DATABASE. QUERY CAD FILE FOR BASIC DIMENSIONS. IF A CONFLICT EXISTS BETWEEN THIS DOCUMENT AND ANY REFERENCED DOCUMENT, THIS ONE TAKES PRECEDENCE.

2. **DIMENSIONING:** ALL DIMENSIONS ARE IN MM. DIMENSIONING AND TOLERANCING ARE PER ASME Y14.5-1994.

3. **TOLERANCES:** UNLESS OTHERWISE STATED, FEATURE SIZE AND POSITIONAL TOLERANCES ARE AS FOLLOWS:

- X ± 0.50 MM
- X.X ± 0.50 MM
- X.XX ± 0.50 MM
- ANGLES ± 2°
- ALL BEND POSITIONS: ± 0.50 MM

4. **MATERIAL:** ALUMINUM, 5052H32, 2MM THICK.

5. **FINISH:** ANODIZE PER MIL-A-8625 TYPE II B. DYE BLACK AND SEAL DYE LAYER AFTER ANODIZING.

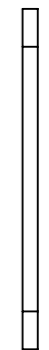
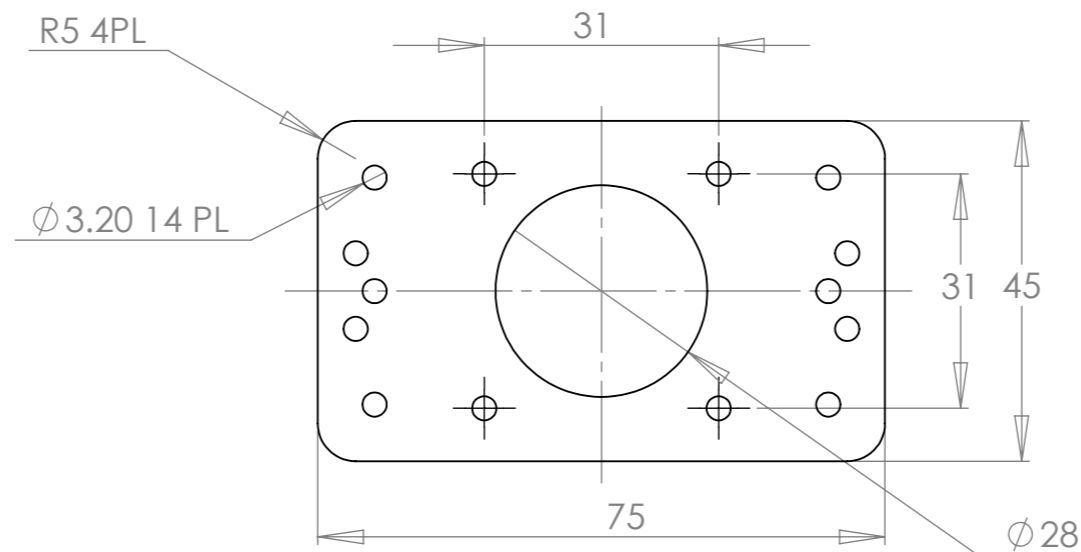
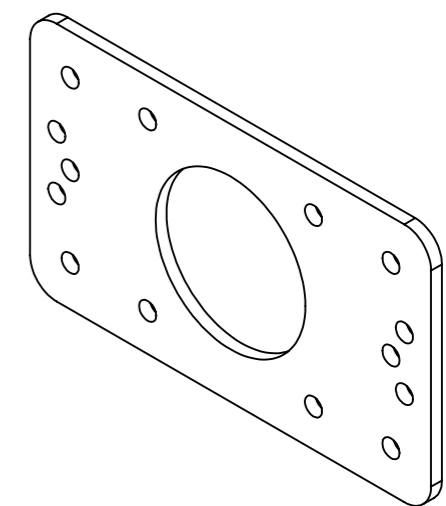
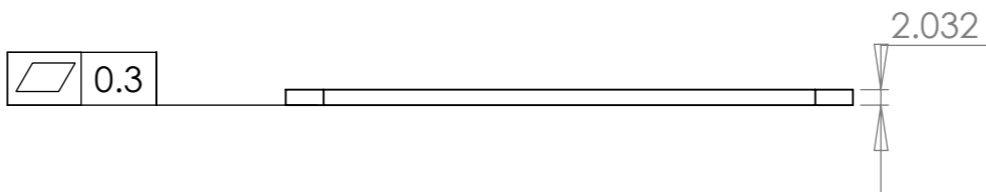
6. **PART CLEANINESS:** REMOVE ALL BURRS & SHARP CORNERS. CLEAN OFF ALL OILS, DIRT, OR OTHER CONTAMINANTS

7. **INSPECTION DIMENSIONS:** DIMENSIONS IN OVALS SHALL BE INSPECTED AT INCOMING INSPECTION.

8. **RoHS COMPLIANCE:** THIS COMPONENT SHALL COMPLY WITH THE EU 2002/95/EC (RoHS) AND EU 2002/96/EC (WEEE) DIRECTIVES

9. **CONTROLLED DRAWING:** NO CHANGES TO THIS DRAWING ALLOWED WITHOUT PRIOR APPROVAL FROM TAM LABS, LLC.

REVISIONS		
REV	DESCRIPTION OF CHANGE	DATE
B	SHEET FORMAT CHANGE; RELEASED UNDER CREATIVE COMMONS ATTRIBUTION SHARE-ALIKE	2012.JUL.05

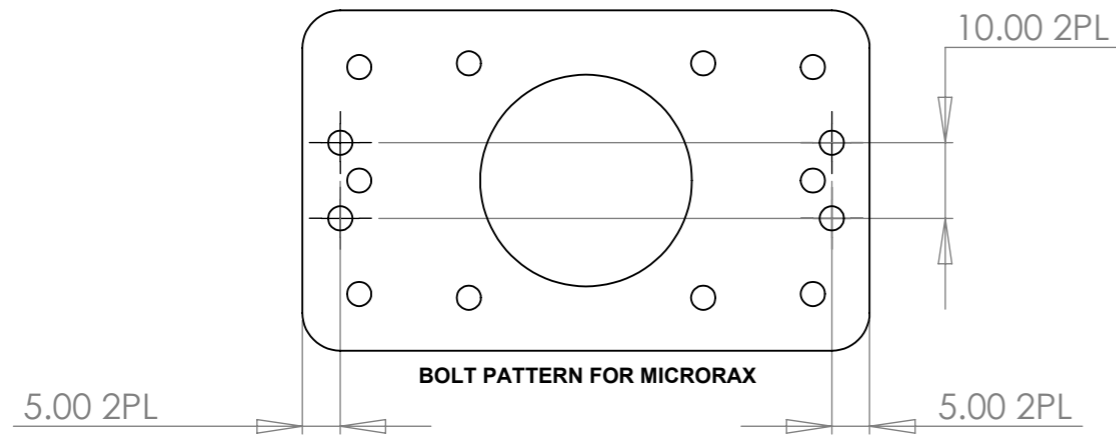
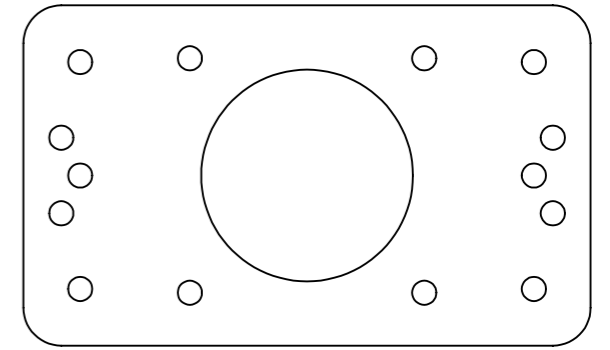
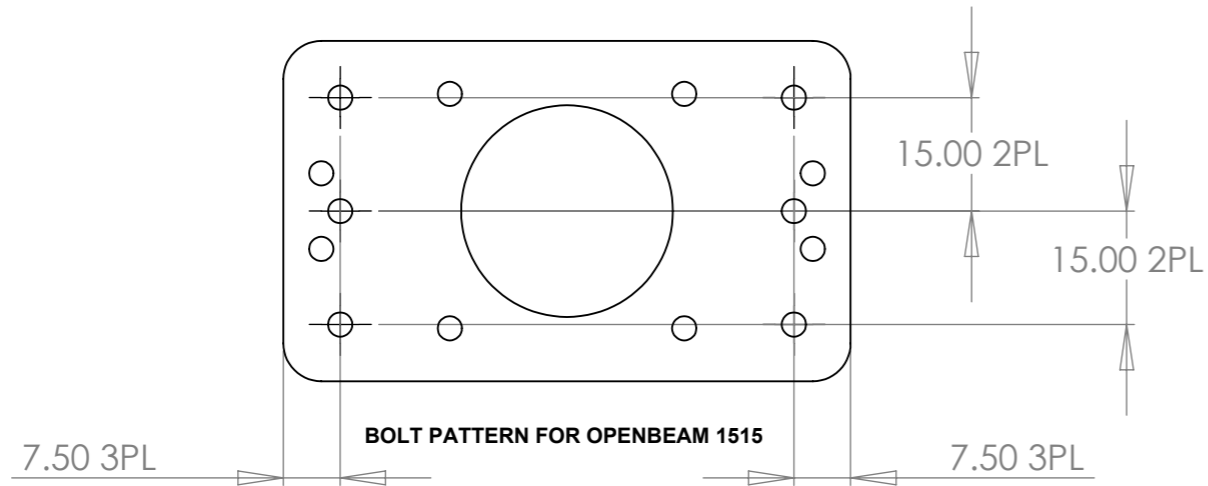


LICENSED UNDER CREATIVE COMMONS CC BY-SA
 The information in this drawing is licensed under Creative Commons Attribution-Share Alike License. You may freely redistribute the content in this document and share it with others as long as the following criterias are met:
 1) The author of the document shall be credited (as OpenBeam USA)
 2) Any derivatives from this work shall be shared under Creative Commons BY-SA license.
 For more details, please visit Creative Commons at www.CreativeCommons.org/licenses/

TOLERANCES:
 REFER TO NOTES FOR TOLERANCE INFORMATION.
SIZE:
 A3

TITLE: PLATE, NEMA 17 MOUNT, OPENBEAM 1515			
ENGINEER: Terence T.S. Tam (譚德成)	PART NUMBER: TL400-000105-002	REV	
DRAWN BY: Terence T.S. Tam (譚德成)			B
DATE CREATED:			

REVISIONS	
SEE REVISION BLOCK ON PAGE 1	



LICENSED UNDER CREATIVE COMMONS CC BY-SA

The information in this drawing is licensed under Creative Commons Attribution-Share Alike License. You may freely redistribute the content in this document and share it with others as long as the following criterias are met:

- 1) The author of the document shall be credited (as OpenBeam USA)
- 2) Any derivatives from this work shall be shared under Creative Commons BY-SA license.

For more details, please visit Creative Commons at www.CreativeCommons.org/licenses/

TOLERANCES:

REFER TO NOTES FOR TOLERANCE INFORMATION.

SIZE:
A3

TITLE:

PLATE, NEMA 17 MOUNT, OPENBEAM 1515

ENGINEER:

Terence T.S. Tam (譚德成)

DRAWN BY:

Terence T.S. Tam (譚德成)

DATE CREATED:

PART NUMBER:

TL400-000105-002

REV

B