
Fingerprint Identification Module

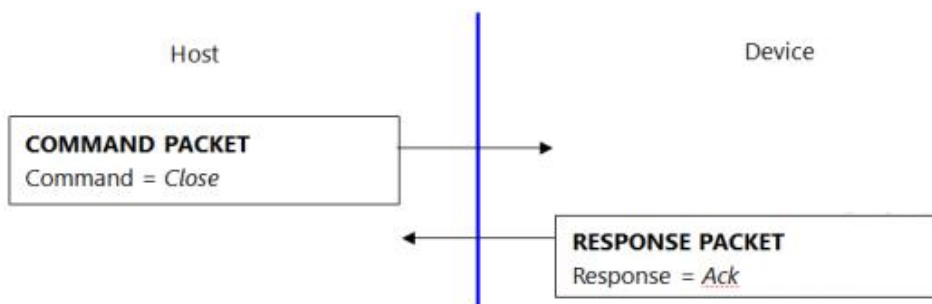
"SBGT_HOLTEK" Special Note

1. Random Power On/Off might cause physical damage of the module.

To prevent this, the host system must power off when the module is idle.

Close command is used for idle checking.

5.2. Termination(*Close*)



Close command does nothing.

Simple sending of CLOSE command and successful receiving of ACK says the module is idle.