

Semiconductors – Discrete Devices

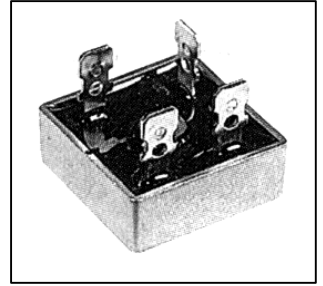
DC Components KPBC3502 & KPBC3506

Features:

- Surge overload rating – 400 Amperes peak
- Low forward voltage drop
- Mounting position – Any
- Electrically isolated base – 1800 volts
- Solderable Cooper leads .40" diameter

Voltage range: 50 to 1000 Volts

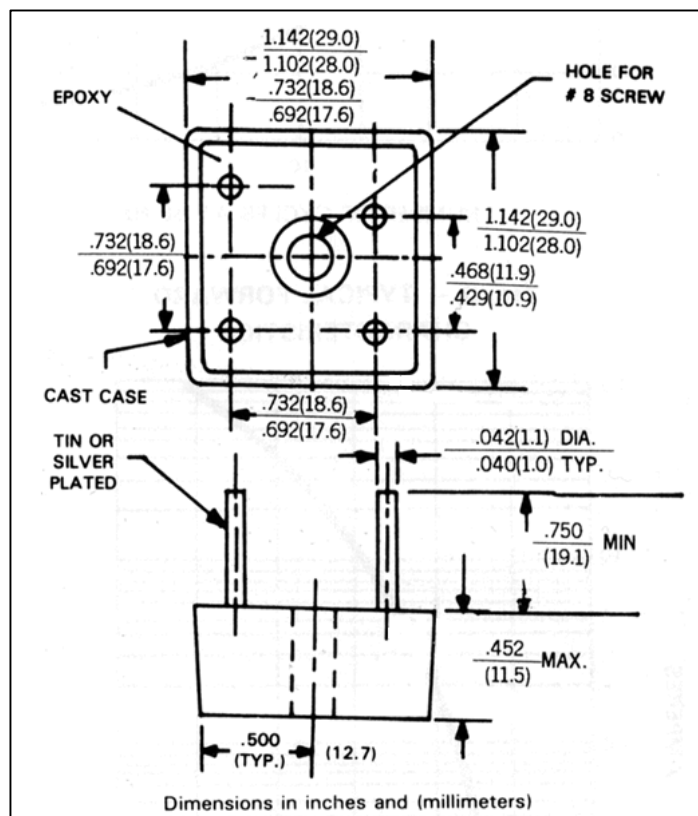
Current: 35 Amperes



DC part no.	KPBC3502	KPBC3506	Units
Maximum recurrent peak reverse voltage:	200	600	V
Maximum RMS bridge input voltage:	140	420	V
Maximum average forward rectified output current at $T_C = 55^\circ\text{C}$:	35		A
Peak forward surge current, 8.3ms single half sine-wave superimposed on rated load:	400		A
Maximum forward voltage drop per element at 17.5A peak:	1.1		V
Maximum reverse current at rated DC blocking voltage per element $T_A = 25^\circ\text{C}$:	10		μA
Operating temperature range T_C	-55 to $+125^\circ\text{C}$		$^\circ\text{C}$
Storage temperature range T_A	-55 to $+150^\circ\text{C}$		$^\circ\text{C}$

Ratings at 25°C ambient temperature unless otherwise specified. Single phase, half wave, 60HZ resistive or inductive load. For capacitive load derate current by 20%.

Dimensions: Inches(mm):



Rating and Characteristics curve:

Fig. 1 – MAXIMUM FORWARD SURGE CURRENT

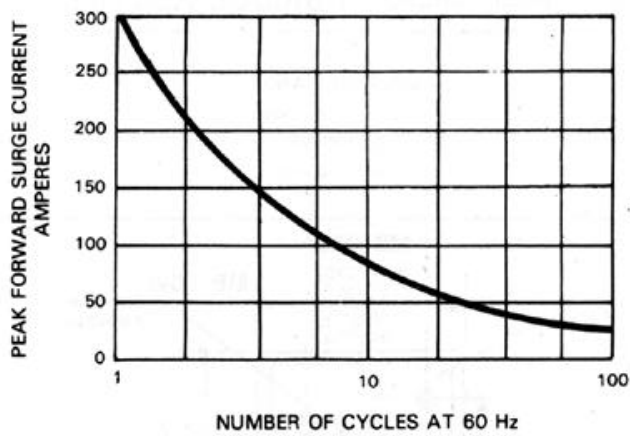


Fig. 3 – TYPICAL FORWARD CHARACTERISTICS

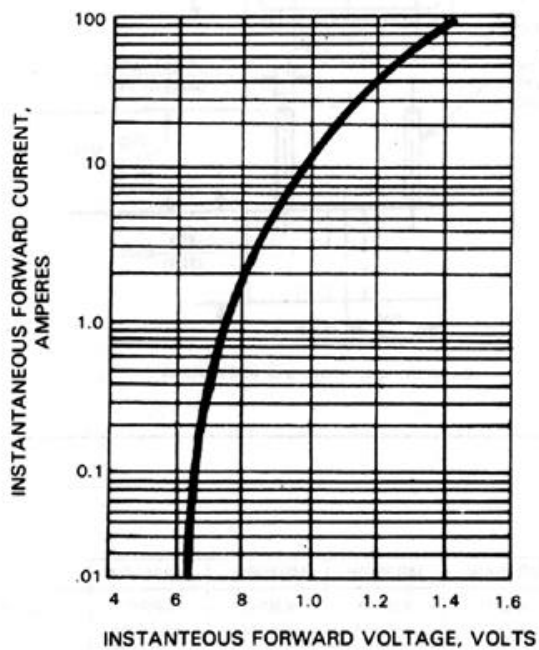


Fig. 2 – DERATING CURVE FOR OUTPUT RECTIFIED CURRENT

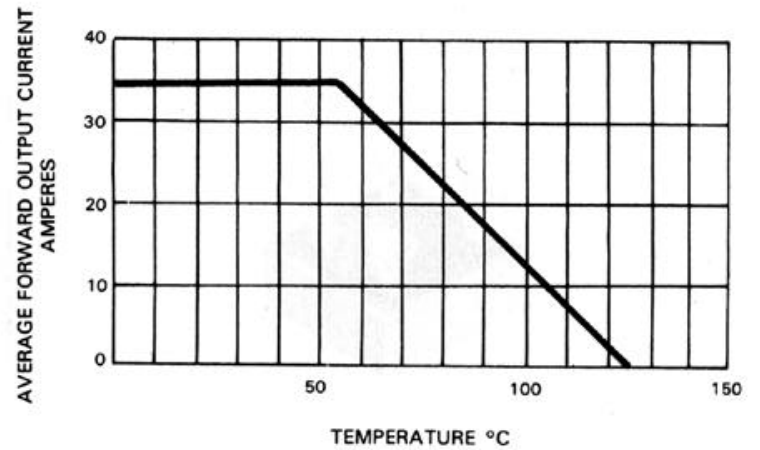


Fig. 4 – TYPICAL REVERSE CHARACTERISTICS

