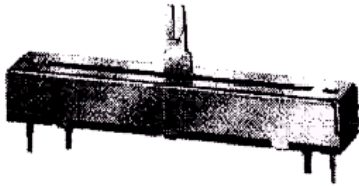
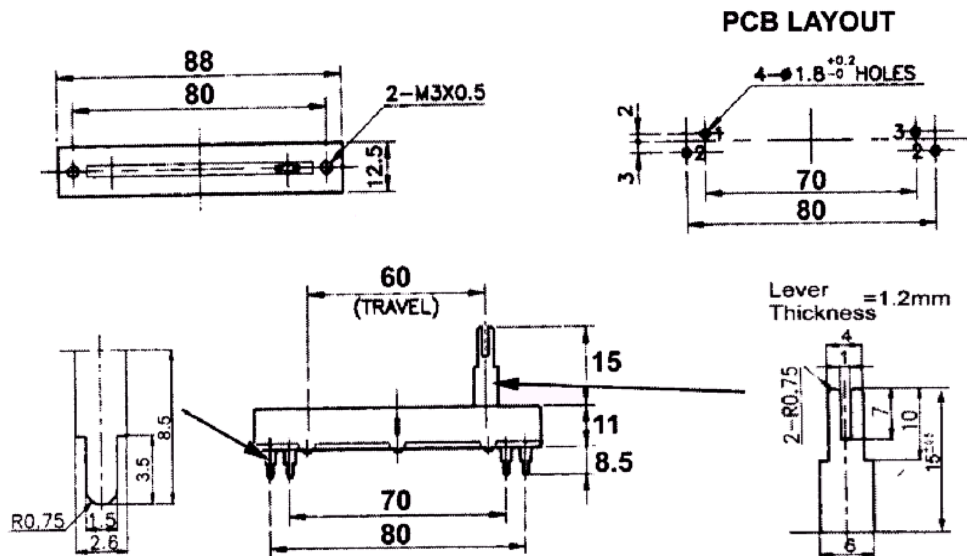


Slide Potentiometers

Photograph:



Technical drawings:



Technical specification:

Electrical:

Total resistance:	(as per table)
Resistance tolerance:	$\pm 20\%$
Rated voltage:	500V (Lin) 350V (Log)
Rated wattage:	0.5 Watt (Lin) 0.25 Watt (Log)
Insulation resistance:	100M Ω @ 500Vdc
Withstanding voltage:	1 min. @ 500Vac

Mechanical:

Operating force:	30~300gf.cm
Lever stop strength:	5kg/60 sec (10mm)
Lever wobble:	12mm Max
Sliding life:	15,000 cycles