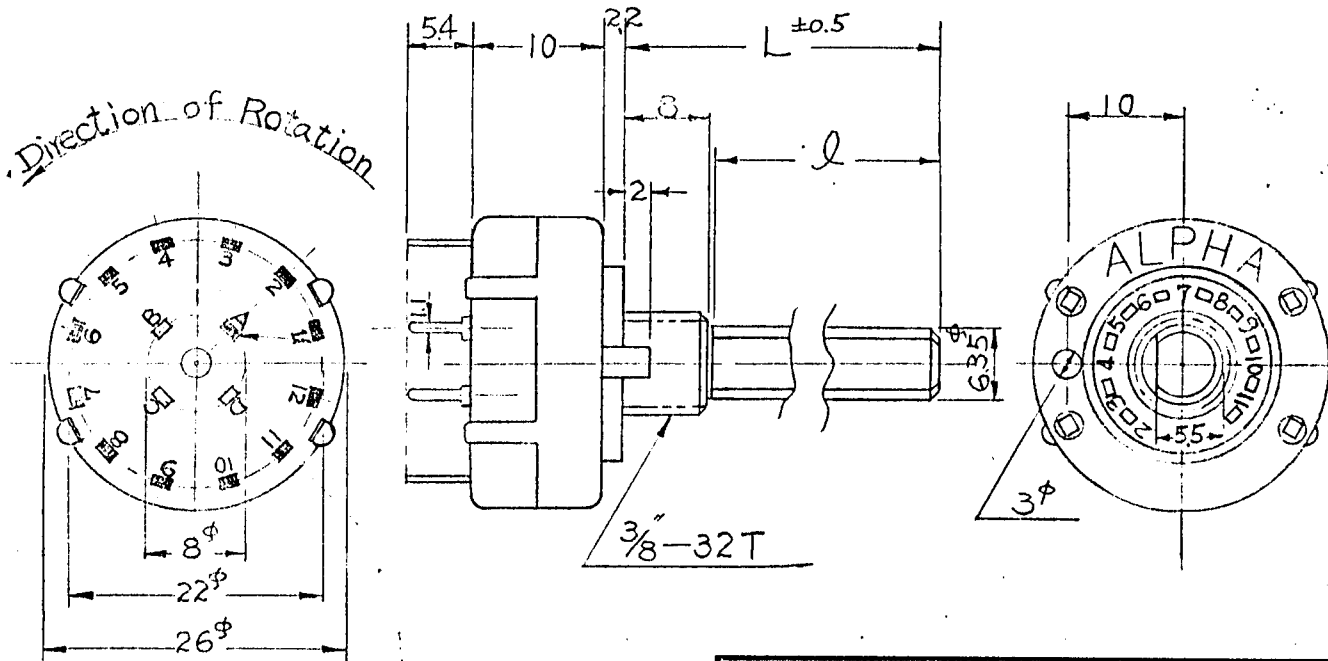


## ROTARY SWITCH

### SPECIFICATIONS

<b>Rating</b>	AC110V 0.35A
<b>Contact Resistance</b>	20 M ohm Max.
<b>Insulation Resistance</b>	DC500V - 100 M ohm Min.
<b>Withstand Voltage</b>	AC500V - 1 Minute
<b>Rotation Torque</b>	1 +/- 0.5 Kg/cm.
<b>Sizes (m.m)</b>	As following Drawings



	$l$	$L$
38F	30	38
18F	10	18
21F	13	21

- Note:** - 1) Tolerances unless otherwise specified +/- 0.4mm  
 2) Accessory parts :  $\frac{3}{8}$  hexagon nut one piece & lockwasher one piece.