

MATERIAL: EMS GRIVORY GVX5H PA66+47%GF
COLOR: BLACK

REVISIONS		
REV	DESCRIPTION OF CHANGE	DATE
01	SHEET FORMAT CHANGE; RELEASED UNDER CREATIVE COMMONS ATTRIBUTION SHARE-ALIKE	2012.JUL.05

TEXTURE AND FINISH:
 ALL SURFACES: TEXTURE TO MOLDETECH 1055-5 MEDIUM TEXTURE OR YICK SANG EQUIVALENT.

NOTES, UNLESS OTHERWISE SPECIFIED:

1. **TOLERANCES:** ALL DIMENSIONS ARE IN MM [INCHES]. UNLESS OTHERWISE STATED, FEATURE SIZE AND POSITIONAL TOLERANCES ARE AS FOLLOWS:

FEATURE SIZE OR POSITION RANGE:	TOLERANCE:
0.00MM TO 25MM:	±0.15MM
FOR EACH ADDITIONAL 25MM:	±0.035MM

2. **CAD:** USE ELECTRONIC FILE TL625-000102-001.X_T FOR TOOLING AND MANUFACTURE.

3. **QUALITY INSPECTION:** IT SHALL BE THE MANUFACTURER'S RESPONSIBILITY TO VALIDATE THAT MOLDED PARTS MANUFACTURED TO THIS SPECIFICATION COMPLY WITH BOTH THE DIMENSIONED GEOMETRY DISPLAYED ON THIS SPECIFICATION DRAWING AND THE UNDIMENSIONED GEOMETRY DEFINED WITHIN THE ASSOCIATED 3D CAD DATA FILE (SEE NOTE 2).

1. DIMENSIONS IN OVALS ARE CONSIDERED BY TAM LABS, LLC TO BE CRITICAL TO FUNCTION "CONTROL DIMENSIONS" AND MUST BE INSPECTED BY THE MANUFACTURER ON AN ON-GOING / REGULAR PRODUCTION BASIS. IT SHALL BE THE MANUFACTURER'S RESPONSIBILITY TO BE PREPARED TO PROVIDE "DOCUMENTED EVIDENCE" OF INSPECTION AND DIMENSIONAL COMPLIANCE WHENEVER REQUESTED BY TAM LABS. INSPECTION RESULTS/ REPORTS MUST BE TRACEABLE BACK TO SPECIFIC DATES OF MANUFACTURE.

2. FOR ALL UNDIMENSIONED GEOMETRY, IT SHALL ALSO BE THE MANUFACTURER'S RESPONSIBILITY TO OBTAIN THE NOMINAL FEATURE SIZE REQUIREMENTS FROM WITHIN THE ASSOCIATED 3D BODY DATA FILE AND COMPLY WITH THE SPECIFIED "FEATURE SIZE TOLERANCE RANGES" INDICATED ON THIS SPECIFICATION DRAWING. ALL DIMENSIONS THAT ARE NOT IDENTIFIED AS "CONTROL DIMENSIONS" NEED NOT BE INSPECTED ON AN ON-GOING / REGULAR PRODUCTION BASIS, HOWEVER, THIS DOES NOT RELIEVE THE MANUFACTURER OF THEIR RESPONSIBILITY FOR COMPLIANCE TO ALL DIMENSIONS - CODED, TOLERANCE OR OTHERWISE DEFINED BY THE 3D DATA FILE.

4. **PARTING LINE, EJECTOR PINS, AND GATES:** GATES, EJECTOR PIN AND PARTING LINE LOCATION SHALL BE APPROVED BY TAM LABS, INC, PRIOR TO TOOLING FABRICATION.

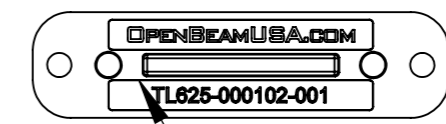
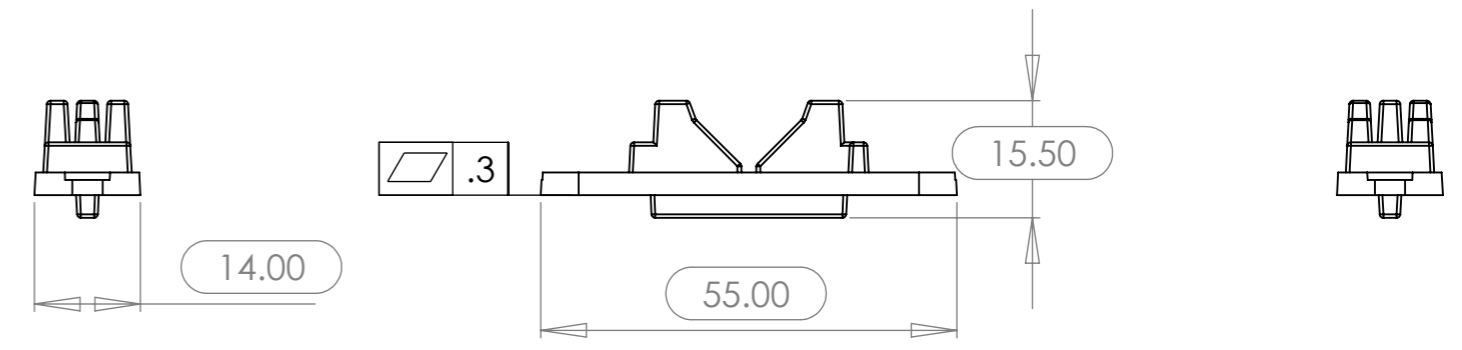
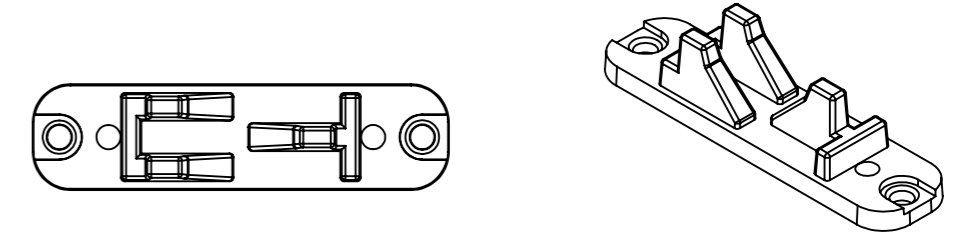
5. **PART CLEANLINESS:** PARTS SHALL BE CLEAN AND FREE OF DIRT, GREASE, OILS AND ANY TYPE OF MOLD MAINTENANCE FLUIDS, FOREIGN PARTICLES AND DISCOLORATIONS. CLEAR PARTS SHALL NOT HAVE ANY VOIDS OR BUBBLES. MOLD RELEASE SHALL NOT BE USED.

6. **PACKAGING:** BAG 4 PER POLYBAG. SUPPLIER SHALL BE RESPONSIBLE FOR ADEQUATE PROTECTION AGAINST SHIPPING AND HANDLING DAMAGE.

7. **PART IDENTIFICATION MARKING:** PART NUMBER, ISO MATERIAL CODE AND RESIN IDENTIFICATION CODE TO BE LOCATED WHERE APPROXIMATELY SHOWN. LETTERING SHALL BE APPROXIMATELY 1.5 MM TALL AND SHALL NOT EXCEED 0.1MM IN HEIGHT ABOVE ADJACENT SURFACE.

8. **CONTROLLED DRAWING:** NO CHANGES SHALL BE MADE TO THIS DRAWING WITHOUT WRITTEN APPROVAL FROM TAM LABS.

9. **RoHS COMPLIANCE:** THIS PART SHALL COMPLY WITH THE EU2002/95/EC(RoHS) AND EU 2002/96/EC (WEEE) DIRECTIVES.



7 MARK PART WITH ISO MATERIAL CODE, RESIN IDENTIFICATION CODE (IE: >>PA66+xxGF<<) AND PART NUMBER IN POSITION APPROXIMATELY SHOWN.



LICENSED UNDER CREATIVE COMMONS CC BY-SA		TOLERANCES:	TITLE:	
The information in this drawing is licensed under Creative Commons Attribution-Share Alike License. You may freely redistribute the content in this document and share it with others as long as the following criterias are met: 1) The author of the document shall be credited (as OpenBeam USA) 2) Any derivatives from this work shall be shared under Creative Commons BY-SA license. For more details, please visit Creative Commons at www.CreativeCommons.org/licenses/		REFER TO NOTES FOR TOLERANCE INFORMATION.	SHAFT CLAMP, OPENBEAM 1515	
SIZE:	ENGINEER:	TERENCE T.S. TAM (譚德成)	PART NUMBER:	REV
A3	DRAWN BY:	TERENCE T.S. TAM (譚德成)	TL625-000102-001	01
	DATE CREATED:			

REVISIONS	
SEE REVISION BLOCK ON PAGE 1	

1

2

3

4

5

6

7

8

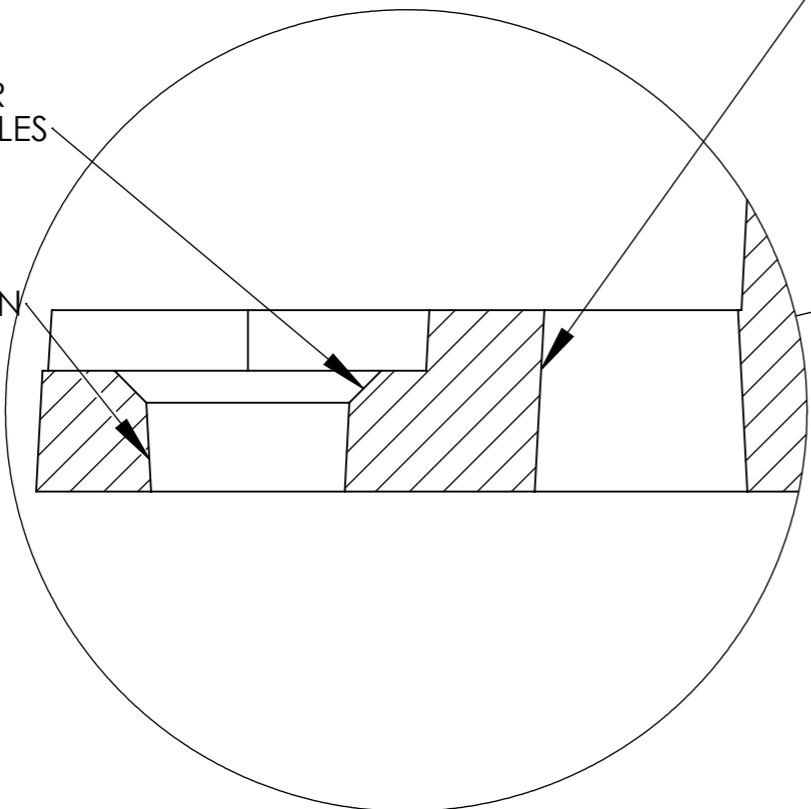
9

10

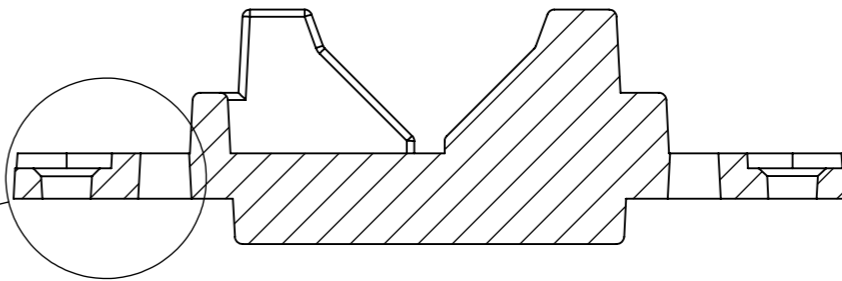
45° X 0.5MM CHAMFER
ON OUTER MOUNT HOLES

NOTE DRAFT DIRECTION

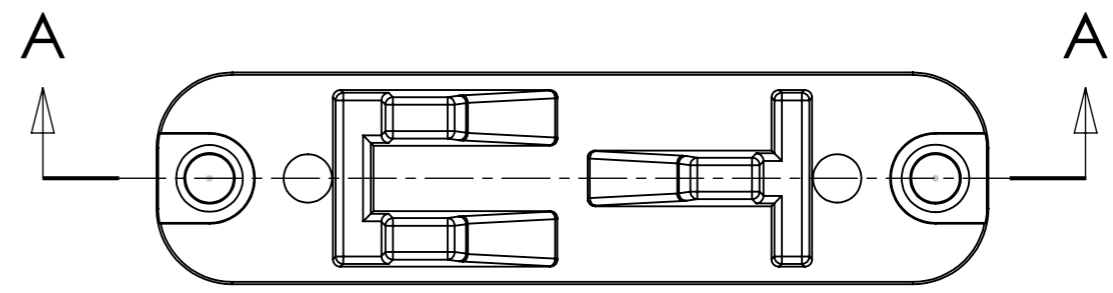
NOTE DRAFT DIRECTION



DETAIL C
SCALE 8 : 1



SECTION A-A
SCALE 2 : 1



LICENSED UNDER CREATIVE COMMONS CC BY-SA
 The information in this drawing is licensed under Creative Commons Attribution-Share Alike License. You may freely redistribute the content in this document and share it with others as long as the following criterias are met:
 1) The author of the document shall be credited (as OpenBeam USA)
 2) Any derivatives from this work shall be shared under Creative Commons BY-SA license.
 For more details, please visit Creative Commons at www.CreativeCommons.org/licenses/

TOLERANCES:
 REFER TO NOTES FOR TOLERANCE INFORMATION.
SIZE:
 A3

TITLE: SHAFT CLAMP, OPENBEAM 1515			
ENGINEER: Terence T.S. Tam (譚德成)	PART NUMBER: TL625-000102-001	REV	01
DRAWN BY: Terence T.S. Tam (譚德成)			
DATE CREATED:			